



- Health Care Services
- Education
- Research
- About Us
- Community

University Hospitals Health System

Home | Site Search:

Clinical Areas



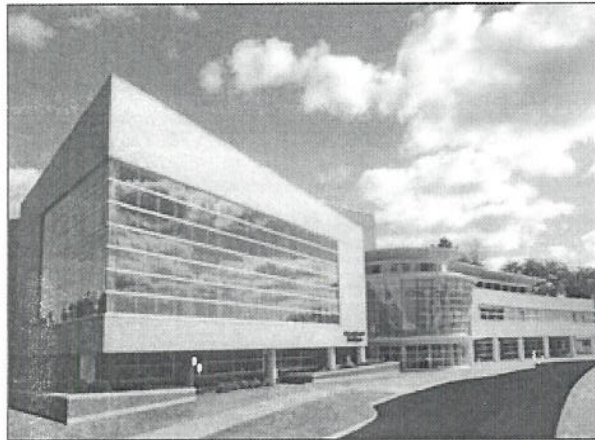
Maps & Facilities

Advanced care, close to home.

[Back](#)

UHHS Westlake Medical Center

960 Clague Road
Westlake, OH 44145



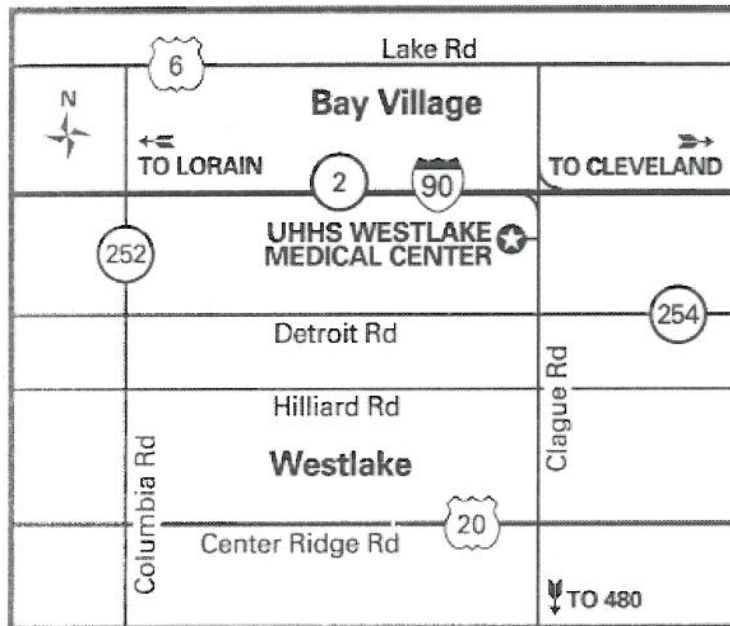
Type: Outpatient Medical Centers
Main Phone: (440) 250-2100

- Health Care Services
- Physician Search
- Physician Groups
 - University Primary & Specialty Care Practices (UPCP)
- Request an Appointment
- International Center
- Centers of Excellence
 - Rainbow Babies & Children's Hospital
 - MacDonald Women's Hospital
 - Ireland Cancer Center
- Clinical Areas
- Health Information
- HIPAA Notice

- Our Health System
- Health Plan Directory
- Employment Opportunities
- Maps & Facilities
- FAQ
- Contact Us
- Privacy Policy
- Terms & Conditions

Description:

Adult/pediatric primary & specialty care. Outpatient surgery-adult & pediatric, Rainbow Spec Ireland Cancer Center, women's health, cardiac rehabilitation, ophthalmology laboratory & services.



UNIVERSITY HOSPITALS HEALTH SYSTEM WESTLAKE MEDICAL CENTER
960 Clague Road, Westlake